



2017 State of Tidal Largemouth Bass Fisheries (Maryland)

Joe Love Joseph.love@maryland.gov
(Maryland Department of Natural Resources,
Tidal Bass Program)

Steve Weimar weimar@aol.com
(Black Bass Advisory Subcommittee,
Chester County Bassmasters)



Status of Upper Bay Fishery



1. Boat Electrofishing



2. Stun Fish



3. Measure and Weigh Fish



4. Inspect and Release Fish



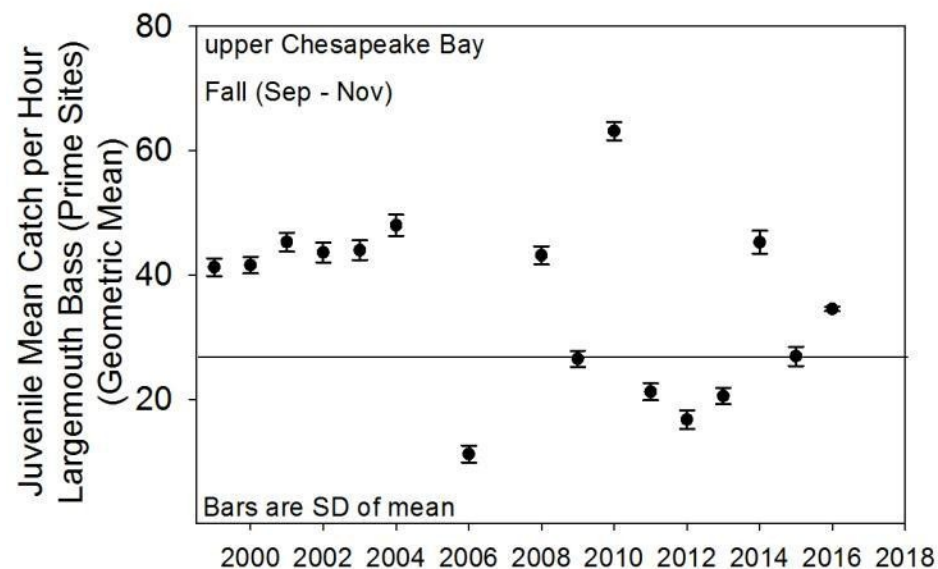
Status of Upper Bay Fishery



Juvenile Bass – Upper Bay



- 2000-2004 GREAT
- 2006-2010 POOR TO GREAT
- 2011-2013 POOR
- 2014-2016 FAIR TO GREAT

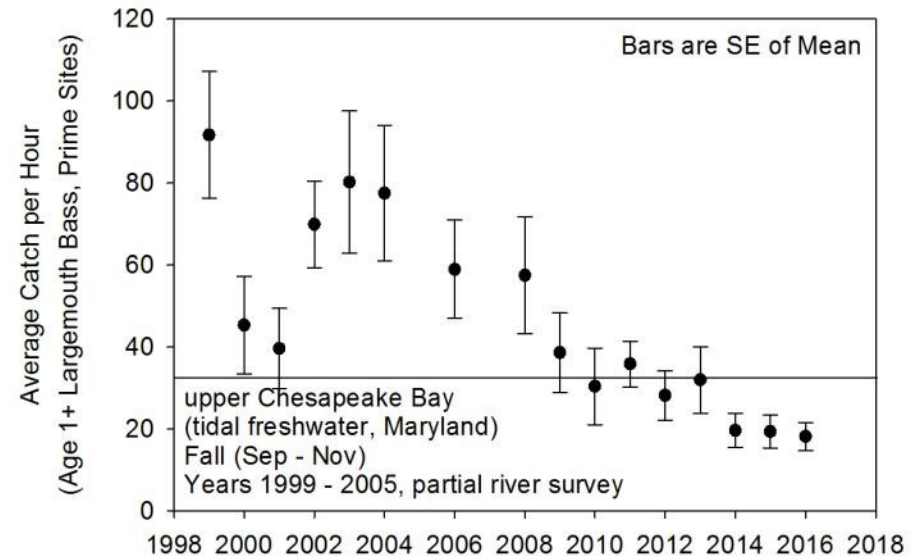


Status of Upper Bay Fishery



Age 1+ Bass – Upper Bay

- 2000-2008 GREAT
- 2009-2013 FAIR
- 2013-2016 POOR



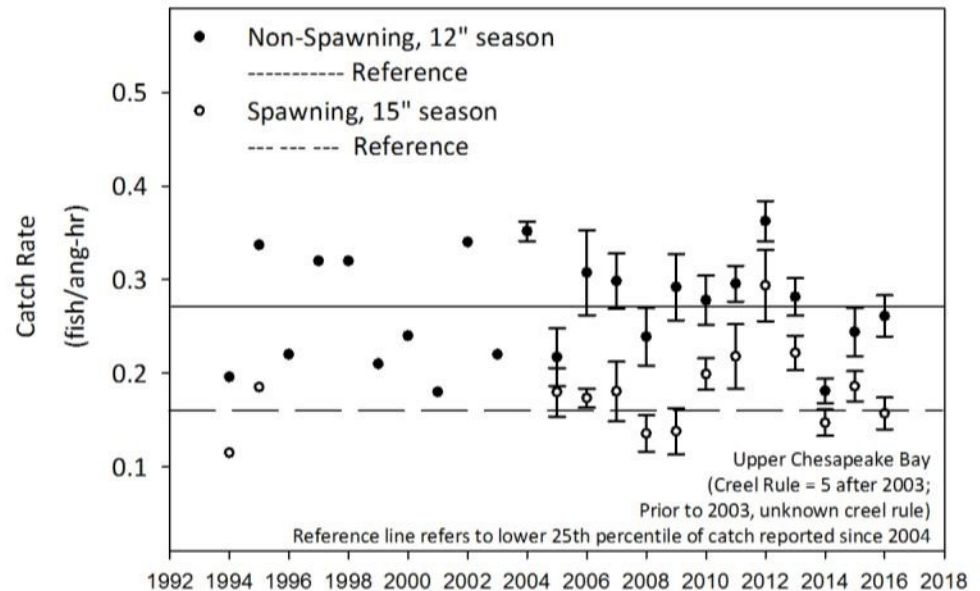
Status of Upper Bay Fishery



Angler Catch – Upper Bay



- 2000-2011 FAIR
- 2012 GREAT
- 2013 FAIR
- 2014-2016 POOR



So what's going on?



Possible Causes

- Some years of poor reproduction
- Changes in SAV cover
- Largemouth bass virus
- Other habitat issues?
 - invasive species, for example



Actions Taken

- Stocking (department)
- Determining Harvest Levels/Enforcement (department)
- Invasive Species Management (general public)
- Voluntary Best Management Practices (tournaments)
- Additional Permit Conditions (tournaments)

Actions



Voluntary Best Management Practices

Tournament Registration Form



Fishing Best Practices - Comp...
A six part series
Fishing Best Practices
Watch Video
Fishing Best Practices - Complete 6 Part Video

The thumbnail for the "Fishing Best Practices - Complete 6 Part Video" series. It features a central image of a fish with a play button overlay. Surrounding the fish are logos for the Maryland Department of Natural Resources, the Bass Fishing Association (BASS), and the National Bass Fishing Association (NBFA). The text "Fishing Best Practices" is written vertically on the left side of the fish image.

Stopping the Spread of Invasiv...
Watch Video
Stopping the Spread of Invasive Species in Maryland Waters

The thumbnail for the video "Stopping the Spread of Invasive Species in Maryland Waters". It features a man in a green shirt standing in front of a lake with a dock. A play button is overlaid on the image. The text "Stopping the Spread of Invasive Species" is written at the bottom of the image. Logos for the Maryland Department of Natural Resources and the National Bass Fishing Association (NBFA) are visible at the bottom left.

Actions



Voluntary Best Management Practices

Below are Best Management Practices (BMP) that Maryland Department of Natural Resources, other agencies, and bass conservation groups encourage during tournaments.

Please select the BMPs that you will use during this tournament. Pass your cursor over bold lettering of each BMP for more details.

- Improve survival of bass by [providing handling tips to anglers](#)
- Improve survival of bass by [excluding July and August](#) in tournament schedule
- Improve survival of bass by [creating a fishing off-limits area](#) at weigh-in site
- Reduce number of fish released at weigh-in area by having a [plan for redistributing fish](#)
- Reduce number of fish released at weigh-in area by [using multiple weigh-in sites](#) within the lake or river
- Reduce number of fish released at weigh-in area by [lowering creel limits](#) per angler or boat
- Reduce number of big fish released at weigh-in area by [implementing a fishable slot](#)
- Reduce number of fish released at weigh-in area by [using a no possession rule](#)
- Increase chances a fish will return home by [restricting fishing to within 20 miles of weigh-in site](#)

- Most tournament directors voluntarily implemented BMP's since Feb 2016
- 24% of groups did not in 2016

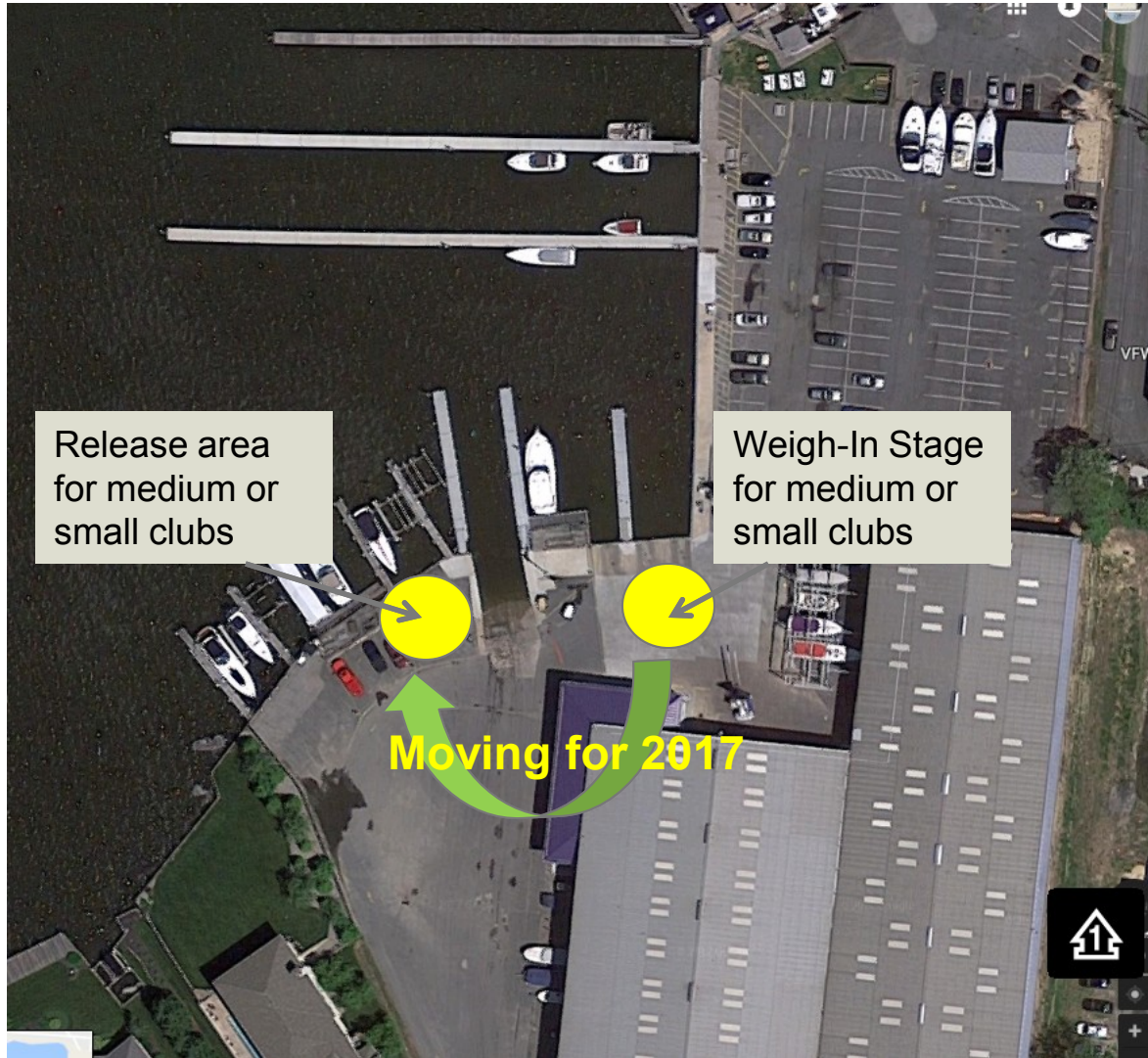
Actions



- **Permit Modification**

- **Option 1: June 15 to October 31** (5 fish possession with a 12-inch minimum, but only 1 of those fish may be greater than 15-inches between June 16 and October 31, unless tournament directors choose Option 2)
- **Option 2: Permit modifications (June 15 to October 31)**
 - “A culling system ...that require punching a hole in the fish’s mouth are NOT permitted.”
 - “Bass shall not be kept in water-filled containers longer than two (2) minutes...without supplemental aeration and/or water exchange”
 - “Tournament participants must ensure bass are recuperated before their release...[t]o allow for recuperation, tournaments shall have mobile holding tank facilities that provide high quality oxygenated and temperature conditions prior to release of the fish...ways that include, but may not be limited to, any of the following: 1) using live wells of bass boats...;2) using a pre-release tank...additional and alternative special conditions may be developed with assistance from the Department”
- All accountability on shoulders of director
- Does not apply to all tournaments
- Does not apply to harvesters or guides who possess bass

Infrastructure: Anchor

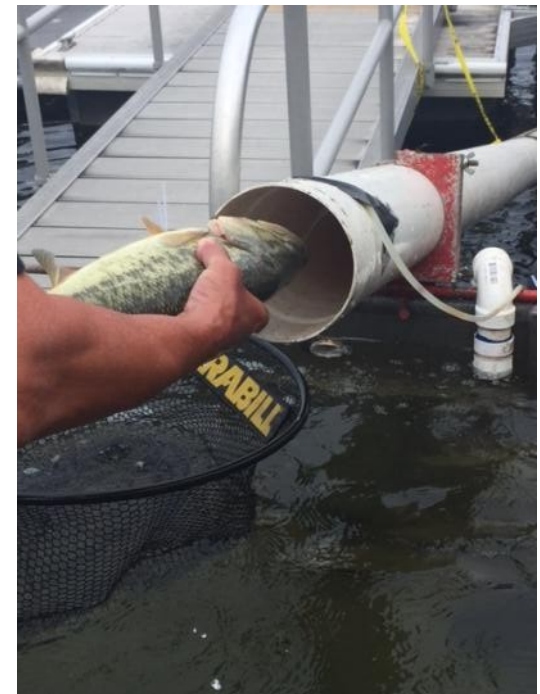


Release area for medium or small clubs

Weigh-In Stage for medium or small clubs

Moving for 2017

- Tanks with oxygenated water
- Mesh bags
- Chute for release



Infrastructure: Anchor



- Mesh bag outreach (right) tethered to tanks
- Bass should be kept in tank for a minimum of 10 minutes before release
- Additional information on tournaments held at Anchor Marine can be found [here](#).

Mesh Bags at a Weigh-in



Some tournaments use mesh bags inside solid water bags during weigh-ins. Use of mesh bags speeds up the weigh process and may reduce stress on bass. The main thing is to remember to keep the fish adequately covered with water. Perhaps most critical is the waiting time between check-in and weigh-in. If you are using a mesh bag system, follow these easy steps.

Boat

- 1) Put the mesh bag all the way down in the water bag and smooth it out so it sits as low as possible
- 2) Fill combined bags halfway with water
- 3) Put bass inside the mesh bag and make sure they are below the water line.

50%
Water



Stage

- 1) If there are aerated holding tanks, take the mesh bag out of the water bag and place into the tanks while waiting to weigh bass.
- 2) Hand the mesh bag to the scale for weighing (water will drain from the mesh bag)
- 3) Refresh the water in the water bag and put the mesh bag back in the water bag



After Weighing

- 1) Gently empty the bass out of the mesh bag directly into the oxygenated tank, if they are provided, or carry to the release boat or location
- 2) If there is a release chute, after 10 minutes or more in the oxygenated tank, place each bass head down in the running water of the chute



Infrastructure: ENSP

Elk Neck State Park

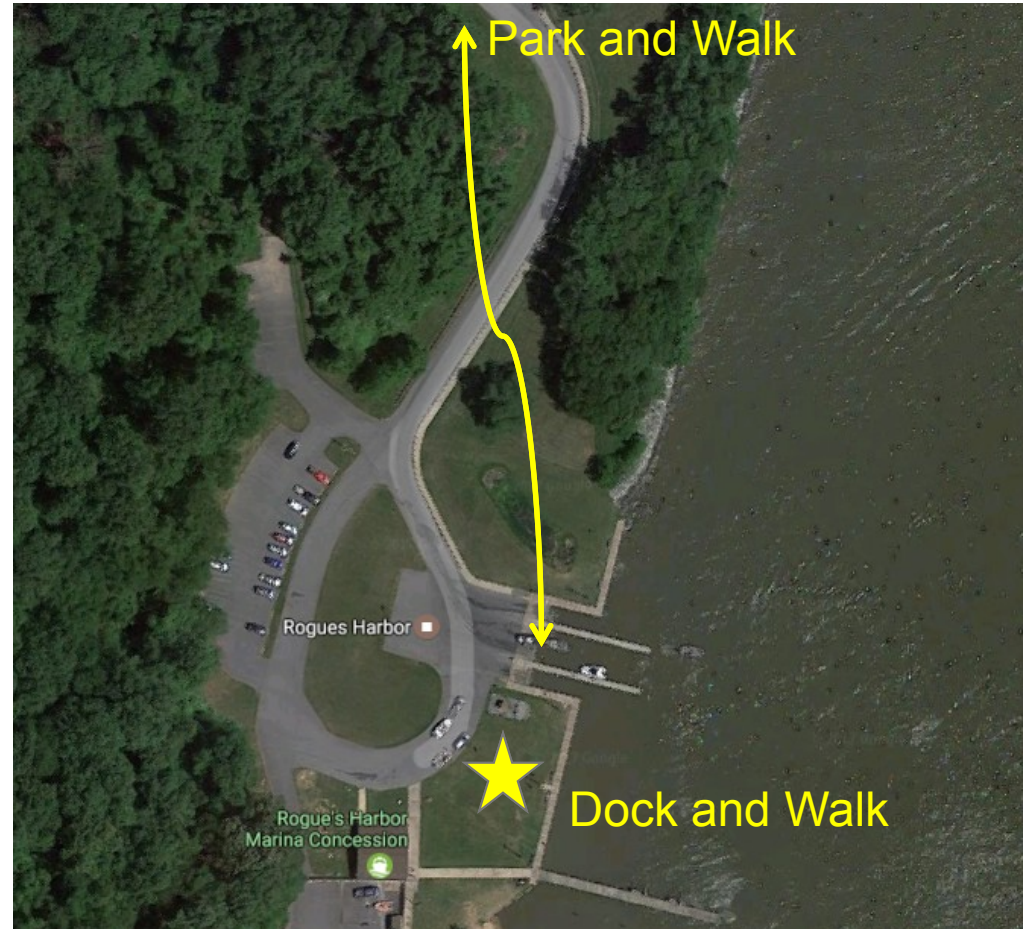


Infrastructure: ENSP



Elk Neck State Park

- Dock and Walk
 - waves and wakes can rock boat
 - a small number of boats may be moored at one time
- Park and Walk
 - bass will be contained in bags longer than 2 minutes
 - slows pace of weigh-in

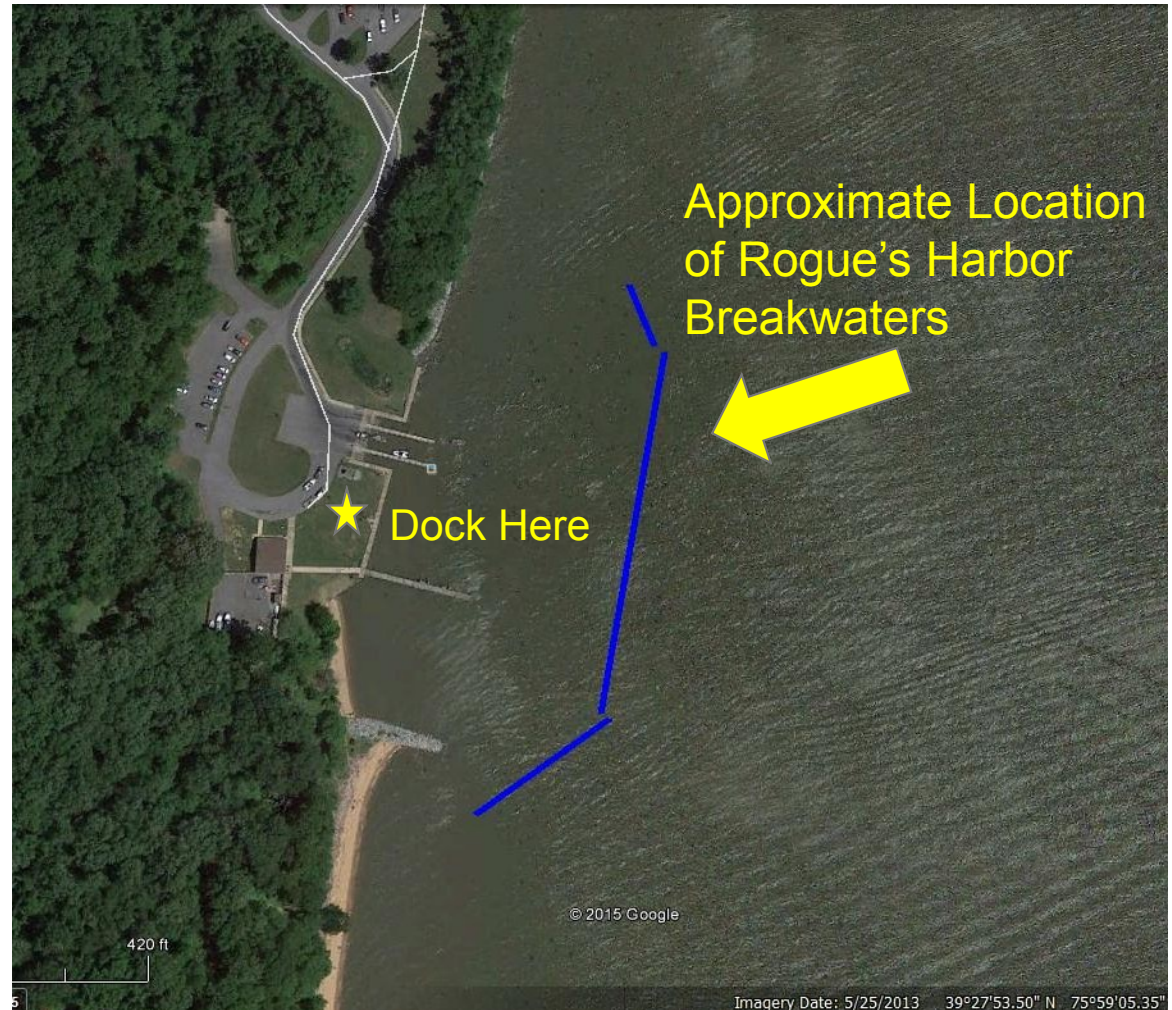


Infrastructure: ENSP

Elk Neck State Park



- Dock and Walk
 - breakwaters could provide more slips for boats and protect moored boats
 - Funding has been allocated
 - Evaluating materials for breakwater
 - Working with experts to finalize plans
 - Start date for the project is not yet known



Infrastructure: ENSP



- Park and Walk
 - tentative organizational map for tournaments planned by 2018
 - oxygenated water tanks may be made available at stage, if requested
 - no current solution for addressing this problem – ideas?



Black Bass Advisory Subcommittee



- **Black Bass Advisory Subcommittee (2016)**
 - Purpose is to make recommendations on black bass management to Sport Fisheries Advisory Commission, who may then submit a recommendation to the Secretary of the Department of Natural Resources
 - Members were vetted using an application process followed by appointment by Sport Fisheries Advisory Commission
- **Keep up with [BBAS meetings!](http://dnr2.maryland.gov/fisheries/Pages/mgmt-committees/bbas-index.aspx)**

<http://dnr2.maryland.gov/fisheries/Pages/mgmt-committees/bbas-index.aspx>

Problems?



- Problems or concern
- Problems or concern
- Problems or concern
- Problems or concern